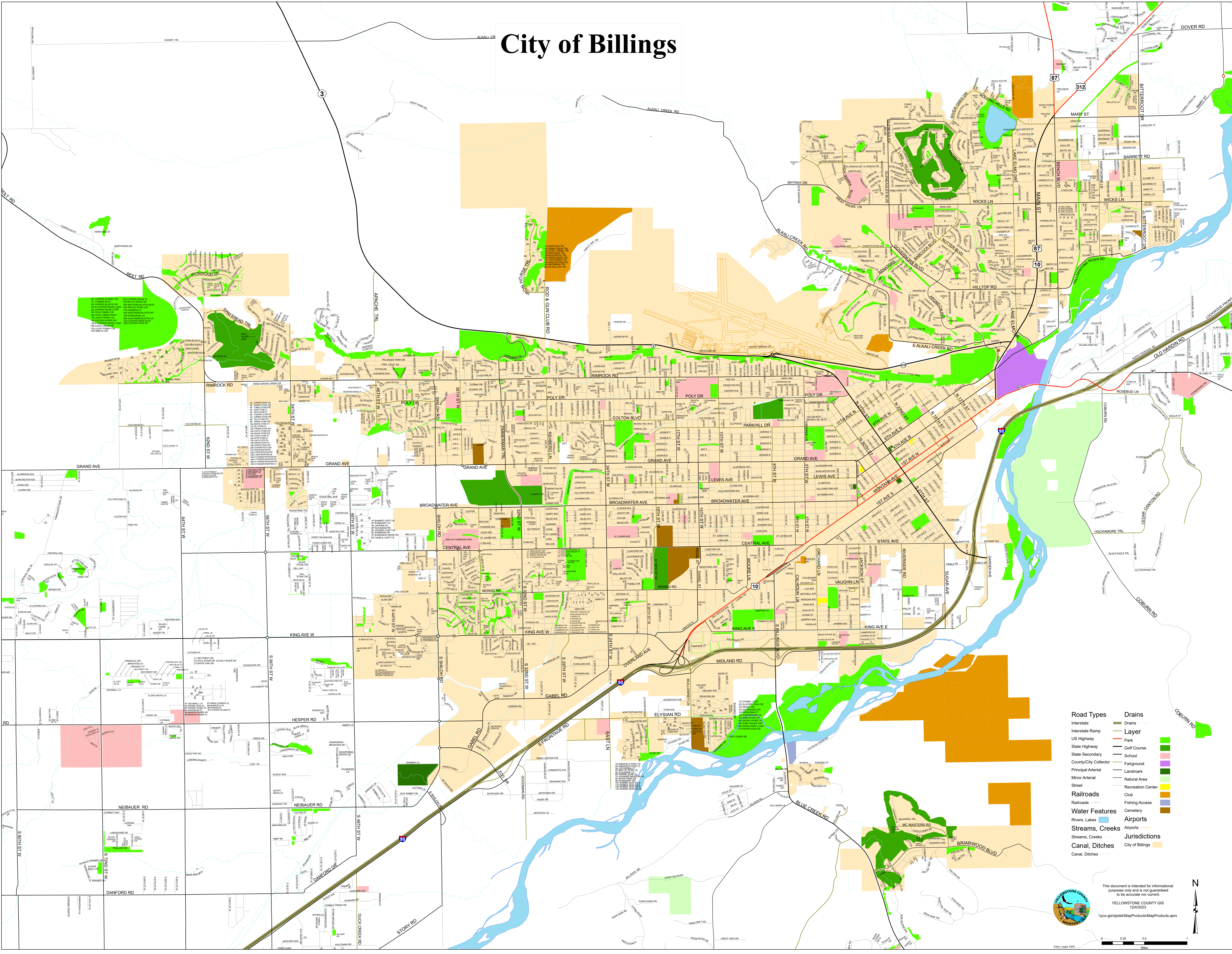


City of Billings



- Road Types**
 - Interstate
 - Interstate Ramp
 - State Highway
 - US Highway
 - State Secondary
 - County/City Collector
 - Principal Arterial
 - Minor Arterial
 - Street
 - Railroads
- Water Features**
 - Rivers, Lakes
 - Streams, Creeks
 - Canal, Ditches
- Drains**
 - Drains
 - Layer
- Park**
 - Park
- Golf Course**
 - Golf Course
- School**
 - School
- Fairground**
 - Fairground
- Landmark**
 - Landmark
- Natural Area**
 - Natural Area
- Recreation Center**
 - Recreation Center
- Club**
 - Club
- Fishing Access**
 - Fishing Access
- Cemetery**
 - Cemetery
- Airports**
 - Airports
- Jurisdictions**
 - City of Billings



This document is intended for informational purposes only and is not guaranteed to be accurate nor current.
YELLOWSTONE COUNTY GIS
12/4/2023
lyco-gis\jpsk\MapProducts\MapProducts.aprx

