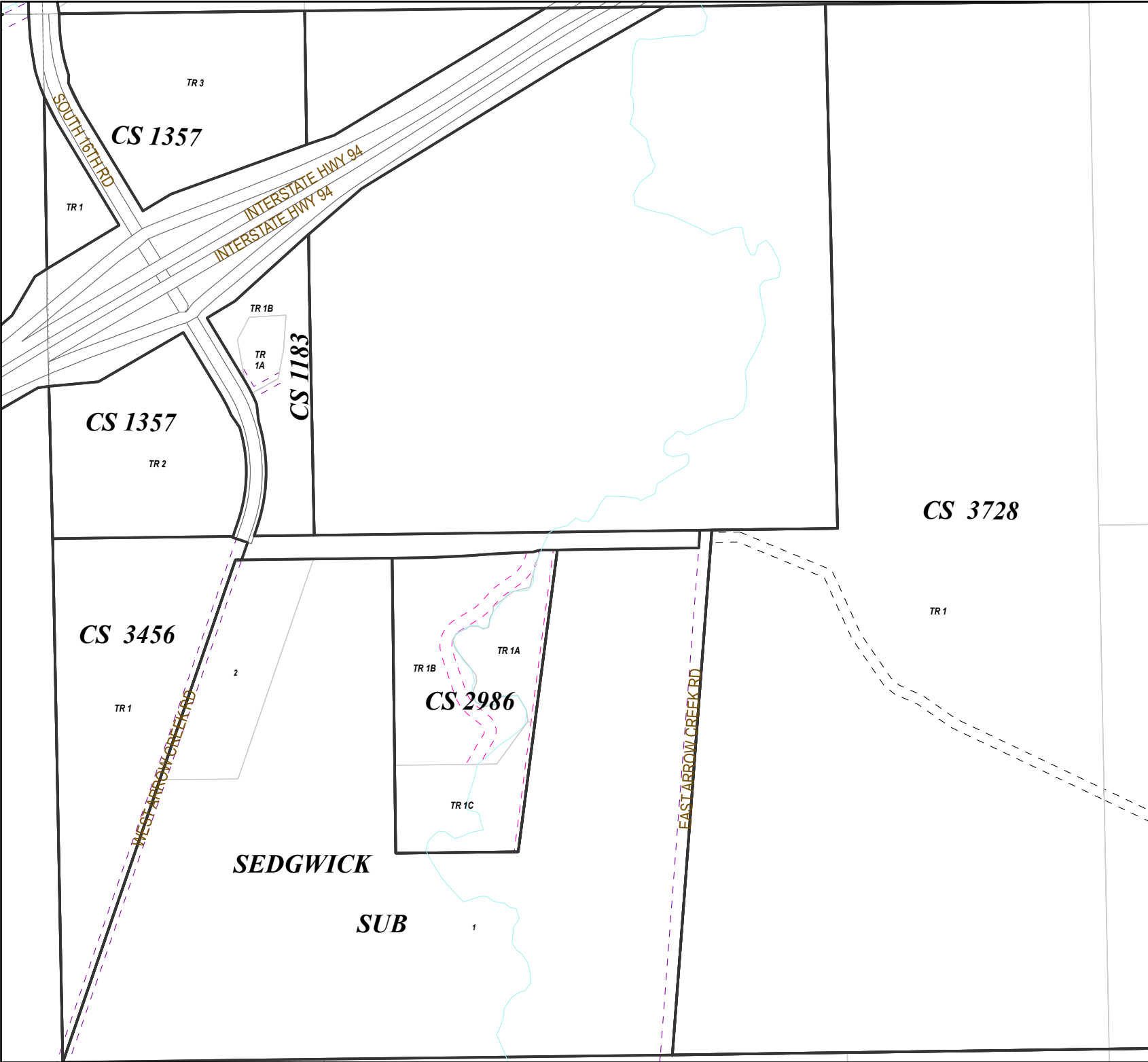
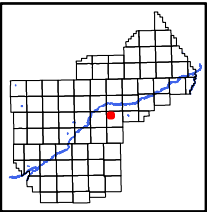


This document is intended for informational purposes only and is not guaranteed to be accurate nor current.



Legend

- Easement Type
- Water feature easements
 - Dry hydrant easements
 - Closed/vacated or abandoned
 - Pedestrian (bike, walking, park, sidewalk)
 - Road easements (public)
 - Road easements (private)
 - Multi-Use easements
 - All other easements



6	5	4	3	2	1
7	8	9	10	11	12
18	17	16	15	14	13
19	20	21	22	23	24
30	29	28	27	26	25
31	32	33	34	35	36



YELLOWSTONE COUNTY GIS
BILLINGS, MONTANA

1 inch = 658 feet
1 inch = 201 meters
SEC 08, T2NR29E
Date: 11/9/2023