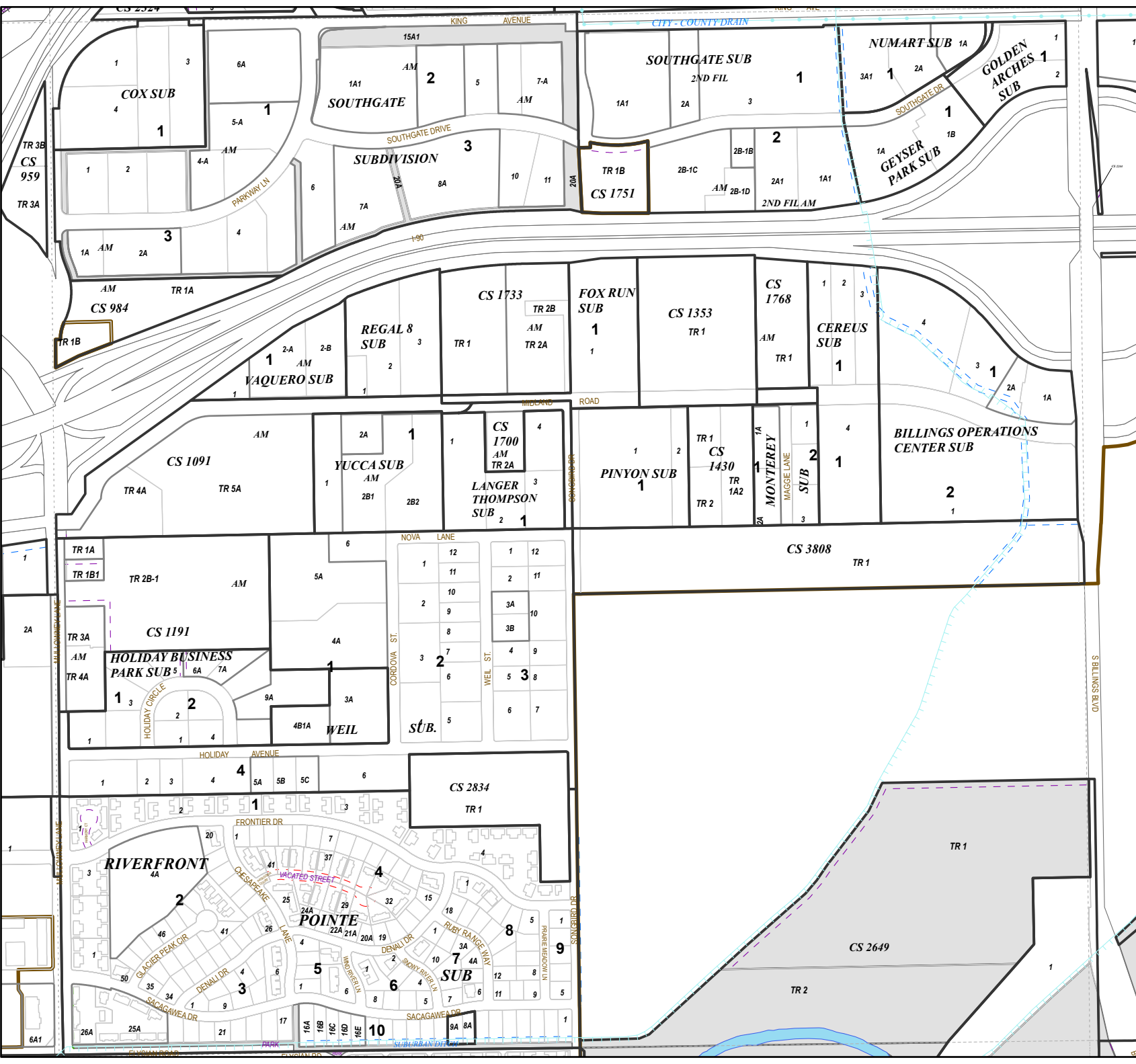
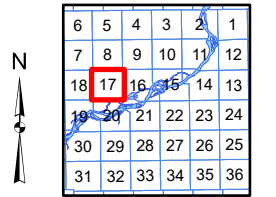
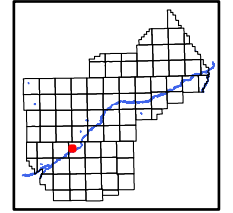


This document is intended for informational purposes only and is not guaranteed to be accurate nor current.



Legend

- Easement Type**
- Water feature easements
 - Dry hydrant easements
 - Closed/vacated or abandoned
 - Pedestrian (bike, walking, park, sidewalk)
 - Road easements (public)
 - Road easements (private)
 - Multi-Use easements
 - All other easements



YELLOWSTONE COUNTY GIS
BILLINGS, MONTANA

1 inch = 659 feet
1 inch = 201 meters
SEC 17, T1SR26E
Date: 4/8/2026