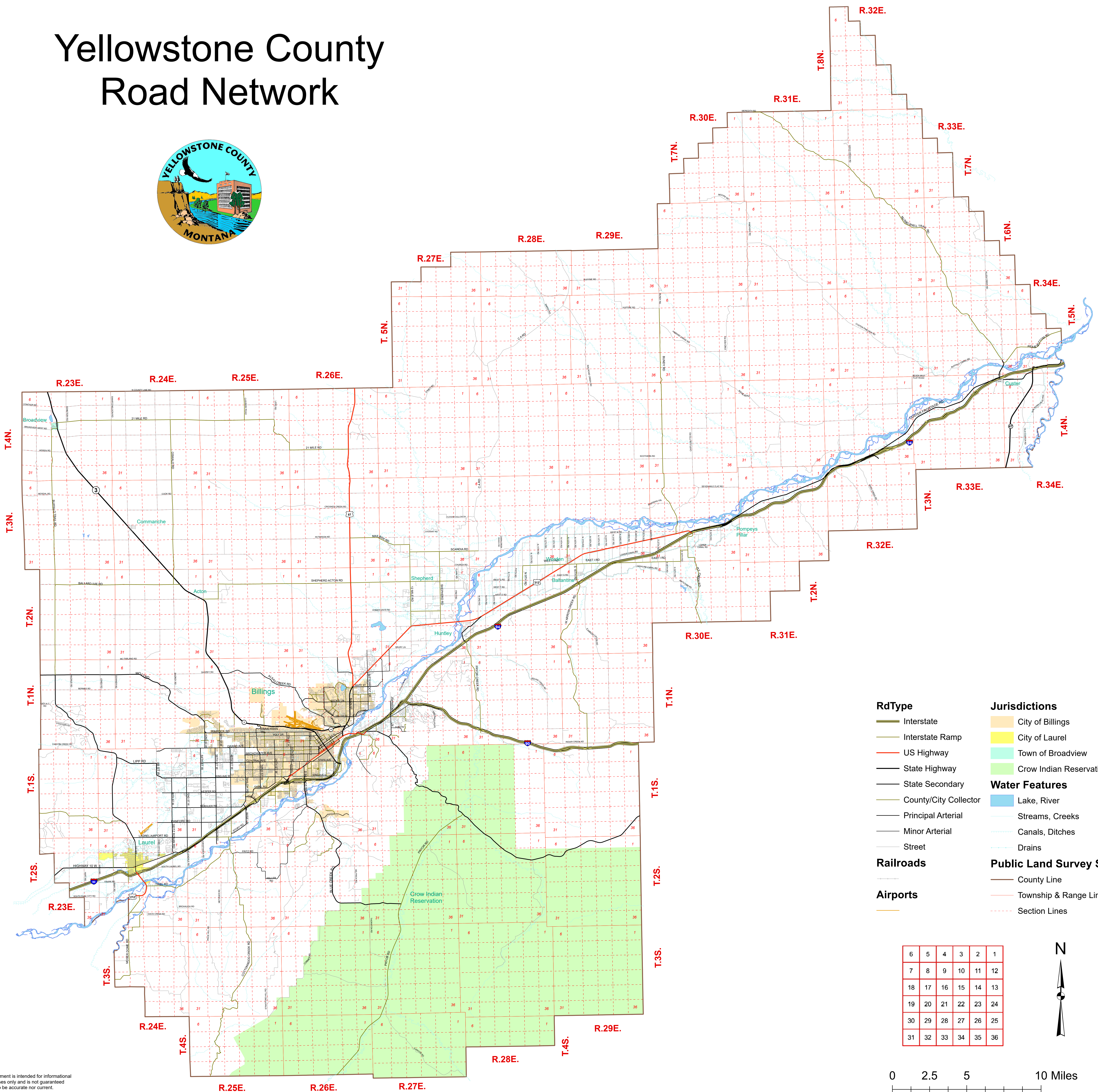
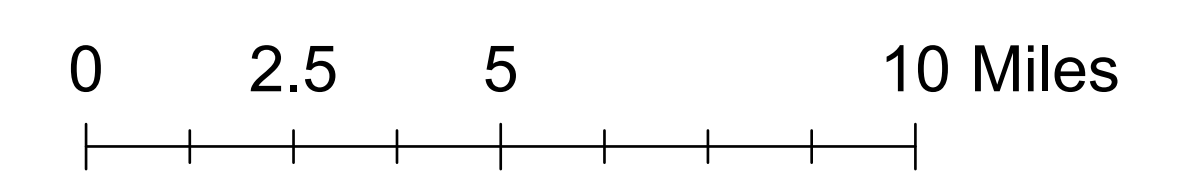
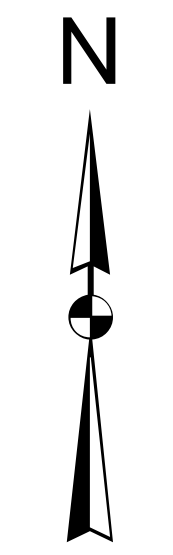


# Yellowstone County Road Network



- RdType**
  - Interstate
  - Interstate Ramp
  - US Highway
  - State Highway
  - State Secondary
  - County/City Collector
  - Principal Arterial
  - Minor Arterial
  - Street
- Railroads**
- Airports**
- Jurisdictions**
  - City of Billings
  - City of Laurel
  - Town of Broadview
  - Crow Indian Reservation
- Water Features**
  - Lake, River
  - Streams, Creeks
  - Canals, Ditches
  - Drains
- Public Land Survey System**
  - County Line
  - Township & Range Line
  - Section Lines

6	5	4	3	2	1
7	8	9	10	11	12
18	17	16	15	14	13
19	20	21	22	23	24
30	29	28	27	26	25
31	32	33	34	35	36



This document is intended for informational purposes only and is not guaranteed to be accurate nor current.  
Date: 12/4/2023  
YELLOWSTONE COUNTY GIS  
M:\roads\county-road.mxd