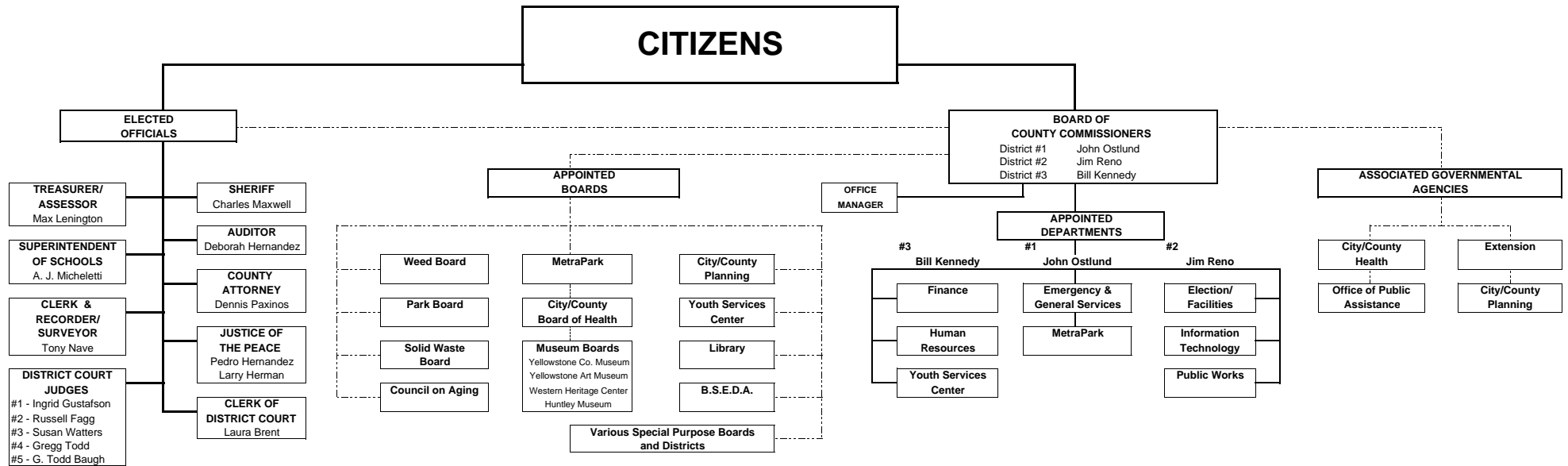


YELLOWSTONE COUNTY, MONTANA ORGANIZATIONAL CHART

AS OF JUNE 30, 2007



NOTE: Commissioner Representatives will rotate left to right every 2 years.
Next rotation is scheduled for January 1, 2009

KEY: _____ = Direct Association
- - - - - = Budgetary Association

Updated: December 26, 2006