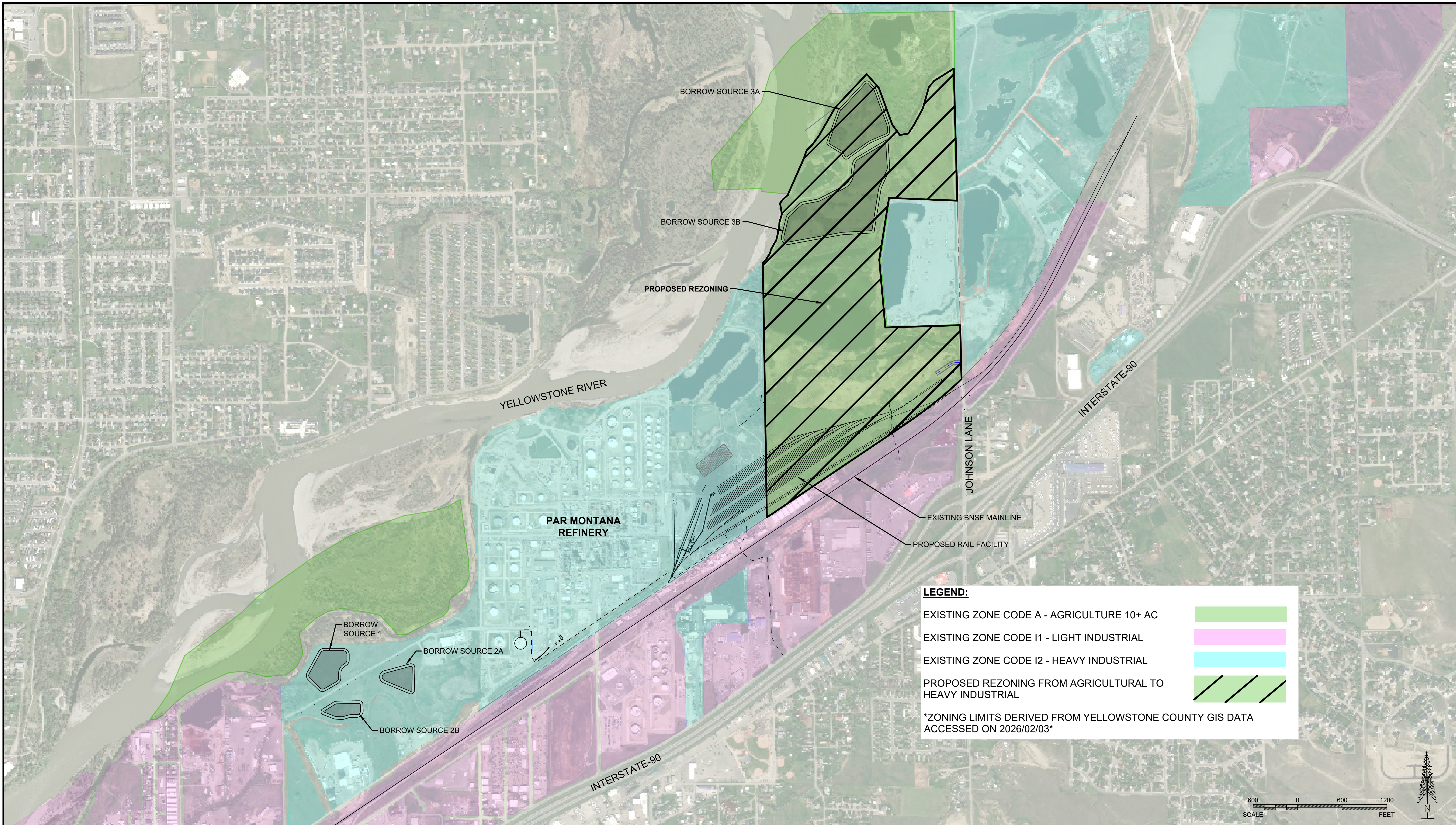


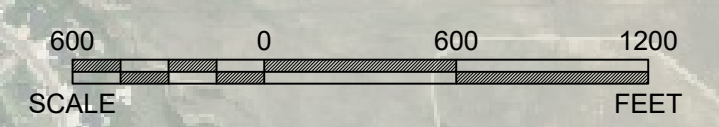
FILE PATH: P:\Billings\25-107 Par Pacific Rail Facility\Design\CADD\Exhibits\20260220 Zoning Map REV2B.dwg



**LEGEND:**

- EXISTING ZONE CODE A - AGRICULTURE 10+ AC
- EXISTING ZONE CODE I1 - LIGHT INDUSTRIAL
- EXISTING ZONE CODE I2 - HEAVY INDUSTRIAL
- PROPOSED REZONING FROM AGRICULTURAL TO HEAVY INDUSTRIAL

\*ZONING LIMITS DERIVED FROM YELLOWSTONE COUNTY GIS DATA  
ACCESSED ON 2026/02/03\*



DWG NUMBER	SHT	REFERENCE DRAWING	REV	DATE	REVISION	BY	CHK	APP
-	-	-	-	-	-	-	-	-

**TRIPLE TREE ENGINEERING**  
 1145 CAP RD  
 HELENA, MT 59602  
 WWW.TRIPLETREEMT.COM  
 TTE JOB NO: 25-107  
 DATE : 02/2026

PAR MONTANA  
 PAR RAIL EXPANSION  
 CIVIL PHASE I  
 EXISTING ZONING MAP

DRAWING NO.	SHT NO.	REV NO.
-	BK	-