


Project:
 YELLOWSTONE DETENTION
 CENTER DISH MACHINE

From:
 Mike Eckley
 (406)696-2175
 m.eckley@bargreen.com

Job Reference Number: 22786

ALL ELECTRICAL REQUIREMENTS NEED TO BE VERIFIED PRIOR ORDERING
 BARGREEN WILL SET, LEVEL AND DO THE START UP ON THE MACHINE
 ALONG WITH THE CHEMICAL TITRATION
 EXCLUSIONS:
 -ELECTRICAL, HVAC & PLUMBING
 BARGREEN WILL PROVIDE FREE SERVICE FOR ALL MANINTENANCE REPAIRS -
 ANY MAJOR REPAIRS WILL BE BY OTHERS
 BARGREEN WILL CHARGE FOR PARTS

Item	Qty	Description	Sell	Sell Total
1	1 ea	DISHWASHER, CONVEYOR TYPE  Champion Model No. 86 PRO Pro Series, 64"W two-tank rack conveyor dishwasher, with 22" prewash with removable scrap basket, proportional rinse, progressive anti-jam drive system, top mounted control panel with HMI user interface, proactive maintenance software, (100) gallons per hour with energy sentinel (idle pump shut-off), (348) racks per hour, single-piece hood design, single-piece stainless steel upper & lower wash arms manifolds, internal removable scrap basket & dual-piece scrap screens, 20" standard vertical clearance, accommodates 18" x 26" sheet pans, full 180° opening leak proof insulated hinged access doors, automatic tank fill, door safety switches, leak-proof ball valve drains, lower front & side enclosure panels, auto delime function, stainless steel heavy gauge construction including base & legs, electric tank heat,1 HP pre-wash, 2 HP wash & power rinse pumps, vent fan control, stainless steel rear manifolds, NSF, cULus, ENERGY STAR®, Made in USA Once piece tank design vs the Hobart two piece design. This alone is a major separation factor. Having a two piece design opens the door for leaks. We use all stainless steel and copper – no plastics in the manifold area. Our HMI Prologic Controller has been in the market for over six years. This proven controller has a built in self diagnostics with two way communications. Also, please keep in mind the cost of ownership- parts cost and service- Chris R.	\$69,883.54	\$69,883.54
	1 ea	**NOTE: Please be advised that all quotes provided are valid for a period of 30 days from the date issued. Champion Industries		

Item	Qty	Description	Sell	Sell Total
		reserves the right to make price adjustments, price increases or add surcharges as appropriate due to tariffs or market fluctuation that are out of our control. Thank you for your understanding.		
1 ea		1 year parts & labor warranty, standard		
1 ea		Complimentary factory authorized performance test included, upon equipment start-up. Consult local Champion sales representative for coordination of the start-up. If customer is beyond 60 miles from Champion authorized service agent, consult factory.		
1 ea		Two-point electrical connection, standard (1a Machine & Tank heat, 1b Booster)		
1 ea		Direction of operation to be specified		
1 ea		Note: For water of 3-grains of hardness or more, Champion recommends adding a water treatment device.		
1 ea		480v/60/3-ph		
1 ea		Electric tank heat, standard		
1 ea		Booster Heater, electric, built-in, 21kw, 70° rise, stainless steel	\$4,721.37	\$4,721.37
1 ea		Extended stainless steel vent cowl with 7" stack & locking damper (set)	\$1,913.81	\$1,913.81
1 ea		20" High hood vertical clearance (standard)		
1 ea		401490 Table Limit Switch (Buttom Style) Table limit switch, includes: 12 ft. pre-wired cord standard (unmounted) (recommended on all conveyor models)	\$508.01	\$508.01
ITEM TOTAL:				\$77,026.73
Total				\$77,026.73

Prices Good Until: 04/02/2025

Contract Terms:

Project Cost: See above

Payment Terms: Verification of credit application and approval by our credit department.

50% Down Payment upon signing this order/contract.

45% 1 week prior to the major installation of equipment.

Balance within fourteen (14) days of completion of installation.

The above items are being special ordered for this project and may not be returned unless agreed to under separate written contract. Under no circumstances shall custom items be returnable. Stock and buy out items which are considered for return shall be subject to a 25% minimum restocking cost plus freight charges both ways.

Equipment items being supplied conform to applicable codes as they are known. If special codes or

circumstances are invoked by governing authorities, it shall be the responsibility of the project owner and the undersigned client agent to pay for any and all additional costs and fees incurred by Bargreen Ellingson, Inc. Permits if required, are not included unless specifically stated for in the item description.

It shall be understood by all parties involved that this document shall become a legal and binding purchase contract upon signing below and receipt of cash funds for the down payment specified above. Signature below by the purchaser acknowledges the acceptance of all terms and conditions as set forth in this contract.

The person signing this contract specifically represents that he/she has the authority to execute this document and its contents on behalf of the purchaser.

Thank you for choosing Bargreen Ellingson to provide your food service equipment for this project.

Approved By: _____

Printed Name: _____

Title: _____

Date: _____

CUSTOMER COMMITMENT: In foodservice, things don't always go as planned. When those things happen, Bargreen Ellingson is committed to making it right. Our staff is given the power to resolve your issue. If they cannot, or if you are not completely satisfied, we encourage you to call our President, David Ellingson, at (253) 234-1400. Thank you for the opportunity to serve you!

ENGAGEMENT CLIENT: En restauration, les choses ne se passent pas toujours comme prévu. Lorsque ces choses se produisent, Bargreen Ellingson s'engage à y remédier. Notre personnel a le pouvoir de résoudre votre problème. S'ils ne peuvent pas, ou si vous n'êtes pas entièrement satisfait, nous vous encourageons à appeler notre président, David Ellingson, au (253) 234-1400. Merci pour l'opportunité de vous servir!

Acceptance: _____ Date: _____

Printed Name: _____

Project Grand Total: \$77,026.73



PROJECT: _____
 ITEM # _____ QTY: _____
 MODEL # _____
 AIA # _____ SIS # _____

86 PRO Electric

HIGH TEMPERATURE 2-TANK ELECTRIC RACK CONVEYOR



Rendered image is for general visual representation only. Please refer to specifications for the latest detailed product information.



STANDARD FEATURES

- **64" Single Tank + 22" Prewash**
- **Perpetual Rack Advance System**
with digital jam monitoring, and mechanical drive protection
- **Automated Delime Function**
with user-customizable alert intervals
- **348 Racks Per Hour**
- **.28 Gallons/Rack With Energy Sentinel** (idle pump shut-off)
- **Advanced Touchscreen Display**
intuitive condition alerts, with user friendly cleaning and operation visual guidance, multi-lingual
- **Enhanced Visual On-board Diagnostics**
quickly identify machine faults for rapid resolution and less downtime
- **Automatic Tank Fill**
- **Programmable Machine Dwell**
pauses rack in wash zone for extended cleaning, NSF Certified Pot & Pan Mode
- **Automatic Drain Valve**
- **Single-Piece Hood Design**
- **Single-Piece Scrap Screen**
more robust and faster cleaning
- **Single-Piece Stainless Steel Upper And Lower Wash Arm Manifolds**
- **20" Standard Vertical Clearance**
accommodates 18" x 26" sheet pans
- **Fully Insulated Doors**
open a full 180° for unrestricted cleaning access
- **All Stainless Steel Heavy Gauge Construction**
including base, legs and feet
- **Enclosure Panels** (front and sides)
- **2 HP Pump Motors** with stainless steel impellers
- **Factory Authorized Start-Up**
- **Vent Fan Control**
- **Made in America**

SPECIFIER STATEMENT

Specified unit will be Champion model 86 PRO Series 2-tank high temperature rack conveyor dishwashing machine. Features top mounted prodigy HMI user interface controls with proactive maintenance software, proportional rinse, using only 100 GPH, optional built-in 21kW booster, progressive anti-jam drive system, energy sentinel (idle pump shut-off), 348 racks per hour, single-piece hood design, single-piece stainless steel upper & lower wash arms manifolds, full 180° opening leak proof insulated hinged access doors.

1 Year parts and labor warranty.

In the USA:
 3765 Champion Blvd, Winston-Salem, NC 27105
 Tel: (336) 661-1556 Fax: (336) 661-1979
www.championindustries.com

In Canada:
 2674 N. Service Rd., Jordan Station, Ontario, Canada L0R1S0
 Tel: (905) 562-4195 Fax: (905) 562-4618
www.championindustries.com/1canada

86 PRO Electric

HIGH TEMPERATURE 2-TANK ELECTRIC RACK CONVEYOR

ACCESSORIES

- ☐ Drain water tempering kit (unmounted)
- ☐ Table limit switch, unmounted (recommended on all rack conveyor installations) (unmounted)
 - o WHISKER STYLE
 - o BUTTON STYLE
- ☐ Vent cowl, stainless steel with 7" stacks & locking dampers
- ☐ Extended vent cowl, with 7" stacks, locking dampers & external curtain
- ☐ Flanged feet (unmounted)
- ☐ Water hammer kit (unmounted)
- ☐ Chemical pump kit (detergent and rinse aid, mounted and interwired)
- ☐ Water pressure regulating valve (unmounted; standard with booster)
- ☐ ION scale prevention device (unmounted)
- ☐ Water softening system (manufactured, warrantied and serviced by Kinetico)
- ☐ Dish racks:
 - o PEG RACK
 - o FLAT RACK
 - o SHEET PAN RACK
- ☐ Splash shields
- ☐ Cantilever sideloader (without hood) for 90° load operation
 - o 24" SIDELOAD
 - o 30" SIDELOAD (ACCEPTS SHEET PANS)
- ☐ Model PRO-90B unloader (90° corner conveyor table)
- ☐ Model PRO-90B loader (90° corner conveyor table)
- ☐ Model RCT 64 or RCT 84 roller conveyor table (see factory for custom length)
- ☐ Stainless steel rear enclosure panels
- ☐ Correctional package (contact factory)

OPTIONS

- ☐ 33" Blower dryer – electric
- ☐ Booster heaters (completely interplumbed, controls are interwired)
 - o 40°F RISE (BUILT-IN) (FIELD CONVERTED)
 - o 70°F RISE (BUILT-IN)
- ☐ Direct link connectivity solution
- ☐ Direct link plus+ connectivity solution

**Cantilever
Sideloader**
(no hood)



PRO-90B
90° Corner Conveyor
table loader and
unloader available



Model RCT 64 or RCT 84
Roller conveyor table





86 PRO Electric

HIGH TEMPERATURE 2-TANK ELECTRIC RACK CONVEYOR

UTILITIES

1	Electrical Connections A Machine electrical connection B Booster electrical connection
2	Hot Water Machine with built-in booster Main connection 3/4" NPT 110° incoming water
4	Hot Water Machine with no booster Main water connection 3/4" NPT 180° incoming water
5A	Drain Connection 1-1/4" NPT Drain Max Flow Rate (g/min) 15
8	Vents A Stack connection – load end 150 CFM @ 1/4" static pressure B Stack connection – unload end 400 CFM @ 1/4" static pressure

Warning: Plumbing and electrical connections should be made by qualified personnel who will observe all the applicable plumbing, sanitary, and safety codes and the National Electrical Code.

Note: Water Hammer Arrestor (meeting ASSE-1010 standard or equivalent) to be supplied (by others) in common water supply line at service connection.

Plumbing Notes: Because of the variation in house-supplied steam and water pressures, steam and water pressure regulating valves (PRVs) may be needed. (Water PRV is standard on machines with booster.) The PRVs can either be purchased from Champion or obtained locally.

Water hardness of 3 grains/US Gal (0.83 Imp Gal) – 5.3 Mg/L or less

Venting Notes: Fabricated duct size: 3-7/8" x 15-7/8" (outside dimensions)

Optional Drain Tempering: 1/2" NPT cold water connection required. 1/2" NPT drain connection from back flow preventer to house drain. (FIELD INSTALLED and PLUMBED).

SPECIFICATIONS

Capacity	
Racks per hr (NSF rated)	348
Wash tank (US gal.)	17
Power rinse tank (US gal.)	17
Prewash tank (US gal.)	9
Conveyor speed (ft/min)	9.6
Conveyor speed Pot/Pan Mode (ft/min) (only one rack at a time in pot/pan)	4.6
Motor Horsepower	
Drive	1/6
Prewash	2
Wash	2
Power Rinse	2
Water Consumption	
US Gal. per hr (max. use)	100
US Gal. per rack	.28
Heating	
Tank Heat, electric (kW)	15
Power rinse, electric (kW)	10
Electric booster (built-in) (kW supplied for 40°F rise)	12
Electric booster (built-in) (kW supplied for 70°F rise)	21
Booster heaters completely inter plumbed, controls are interwired.	
Venting	
Load end (minimum CFM)	150
Unload end (minimum CFM)	400
Standard 20"x 20" Rack Complement	
Peg	1
Flat	1

Two Tank PRO Rack Machine and Booster Ratings

The tables below give the ratings for each model. The ratings include the requirements of the 12 and 21 kW booster heaters when they are in use.

Machines with a Dual point electrical connection:

86 PRO Electric Tank Heat, 21 kW Booster Only			
Elec. Specs	Rated Amps	Minimum Supply Ckt. Conductor Ampacity	Maximum Overcurrent Protective Device
208/60/3	59	80	80
240/60/3	51	70	70
480/60/3	26	35	35
575/60/3	22	30	30
86 PRO Electric Tank Heat, 12 kW Booster Only			
Elec. Specs	Rated Amps	Minimum Supply Ckt. Conductor Ampacity	Maximum Overcurrent Protective Device
208/60/3	34	45	45
240/60/3	29	40	40
480/60/3	15	20	20
575/60/3	12	15	15
86 PRO Electric Tank Heat, No Booster			
Elec. Specs	Rated Amps	Minimum Supply Ckt. Conductor Ampacity	Maximum Overcurrent Protective Device
208/60/3	98	125	125
240/60/3	85	110	110
480/60/3	42	60	60
575/60/3	33	45	45

Machines with a Single point electrical connection:

86 PRO Electric Tank Heat, 21 kW 70°F Booster			
Elec. Specs	Rated Amps	Minimum Supply Ckt. Conductor Ampacity	Maximum Overcurrent Protective Device
208/60/3	n/a	n/a	n/a
240/60/3	136	175	175
480/60/3	68	90	90
575/60/3	55	70	70
86 PRO Electric Tank Heat, 12 kW 40°F Booster			
Elec. Specs	Rated Amps	Minimum Supply Ckt. Conductor Ampacity	Maximum Overcurrent Protective Device
208/60/3	132	175	175
240/60/3	114	150	150
480/60/3	57	80	80
575/60/3	45	60	60

Note:

Machine ships as a dual point electrical connection standard. Easily converted to a single point connection by a qualified electrician (except as show in above tables).

In the USA: 3765 Champion Blvd, Winston-Salem, NC 27105 | Tel: (336) 661-1556 Fax: (336) 661-1979 | www.championindustries.com

In Canada: 2674 N. Service Rd., Jordan Station, Ontario, Canada L0R1S0 | Tel: (905) 562-4195 Fax: (905) 562-4618 | www.championindustries.com/1canada

Champion®
The Dishwashing Machine Specialists

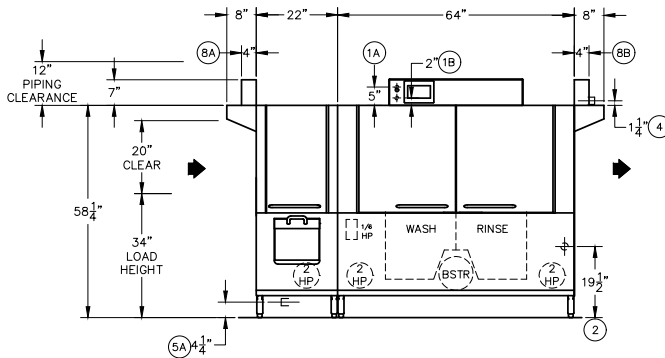
86 PRO Electric

HIGH TEMPERATURE 2-TANK ELECTRIC RACK CONVEYOR

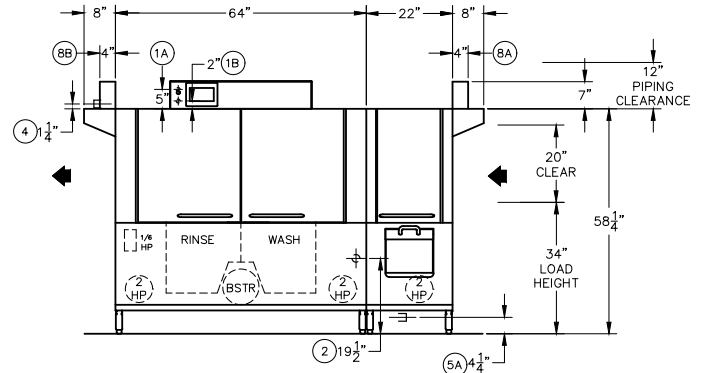
Shipping weight crated: 1,200 lbs. Dimensions shown in inches

Front View

Left to Right Model

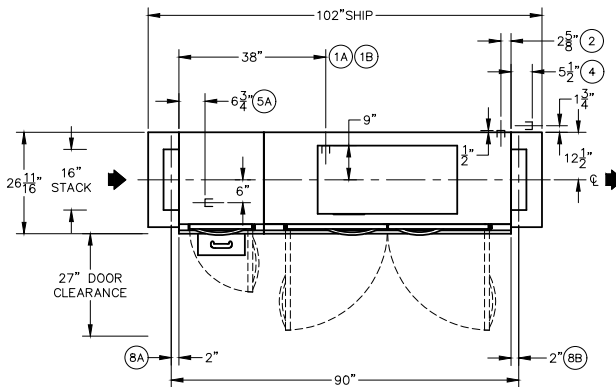


Right to Left Model

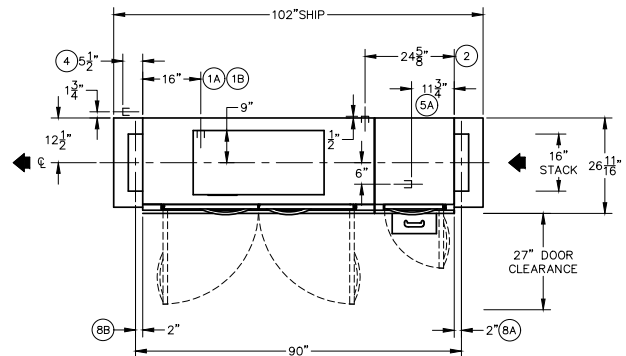


Plan View

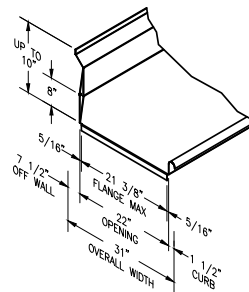
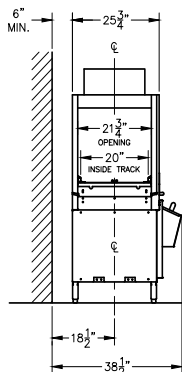
Left to Right Model



Right to Left Model

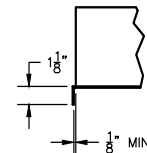


End View



Suggested Table Construction

Flange Details



In the USA: 3765 Champion Blvd, Winston-Salem, NC 27105 | Tel: (336) 661-1556 Fax: (336) 661-1979 | www.championindustries.com

In Canada: 2674 N. Service Rd., Jordan Station, Ontario, Canada L0R1S0 | Tel: (905) 562-4195 Fax: (905) 562-4618 | www.championindustries.com/1canada

Rev. 08/2024 Printed in U.S.A.

Due to an ongoing value analysis program at Champion, specifications contained in this catalog are subject to change without notice.

