

## Safety Plan for Speed Contest in Yellowstone County

Objective: To ensure a safe environment for all participants, spectators, and personnel involved in a speed contest held in Yellowstone County, Montana.

### 1. General Safety Protocols

Event Registration: All participants must register before the event, providing personal information, emergency contacts, and a waiver form acknowledging the risks associated with speed contest.

#### Licensing and Vehicle Eligibility:

- All drivers must hold a valid driver's license.
- Vehicles must be inspected and certified as race-ready by a qualified official.
- All vehicles should comply with the regulations and requirements for safety equipment, including battery hold down, helmets, proper seat belts, anti-freeze overflow tank, appropriate tires, etc.
- Safety Equipment: Vehicles must be equipped with necessary items to pass tech inspection.
- Spectators must stay behind designated barriers or fences.
- Drivers and pit crew must have a wrist band visible at all times.

#### Runway Evacuation Plan:

- Evacuation plan will be detailed in the drivers meeting with outlined example, before racing starts.
- Racing will be shutdown until the area is clear and deemed safe to run again.
- In the event, during a brake malfunction, there is a 1/4 mile immediately after the finish line for your car to slow down in a safe manner

### 2. Track Setup and Design

#### Runway Preparation:

- Molt Road and Buffalo Trail will be inspected and cleared of any debris, obstacles, or hazards prior to the event.
- A 1/8-mile drag strip will be clearly marked on the road with proper lane designations.

- There will be caution cones signifying the start, end, and indication of the turn exiting the runway.

#### Safety Zones:

- A minimum of 100 feet of clear area before and after the starting line should be designated for acceleration and deceleration.
- Emergency response vehicles (fire truck, ambulances, etc.) will be onsite to respond quickly in case of an emergency.

#### Fencing and Barriers:

- Spectators cannot be on the track after the starting line. This is to protect spectators from the potential of vehicle loss of control.
- Spectators must be located at least 100 feet away from the track in all areas except designated seating areas.

#### Communication:

- Two-way radios will be provided to event organizers, race officials, and emergency responders to ensure smooth communication.

### 3. Event Personnel and Responsibilities

#### Race Officials:

- A team of race officials will be responsible for starting and timing the races, inspecting vehicles, and enforcing all safety protocols.

#### Medical and Emergency Response:

- EMS, Sheriff Deputies, and the Fire Department will be on-site at all times.
- Emergency responders will be trained and equipped to deal with potential accidents, fires, and medical emergencies.

#### Fire Safety:

- Fire extinguishers will be stationed at the starting line and other strategic locations on the track.

- Additional resources will be available for clean up such as floor dry, brooms, shovels, etc.

### 3. Race Procedures

#### Pre-Race Safety Checks:

- All vehicles must undergo a thorough safety inspection before the start of the event. Vehicles not meeting the required safety standards will not be allowed to race.

#### Warm-Up and Test Runs:

- Drivers must slowly and safely proceed down the track to enter the staging lanes and ensure their vehicles are operating properly before engaging in the actual race.

#### Race Timing and Staging:

- Vehicles will be staged in a safe, orderly manner and will be monitored by race officials to ensure that drivers are positioned properly.
- A clear signal system (lights, hand signals, flags) will be used to indicate when drivers are to start and stop, ensuring smooth and safe racing conditions.

### 5. Weather and Environmental Considerations

#### Weather Monitoring:

- The event will be cancelled or postponed if weather conditions are unsafe (e.g., rain, wind gusts, or low visibility).
- Continuous weather monitoring will be conducted, and any changes in weather will be communicated to all participants.

#### Visibility:

- In the event of fog, heavy rain, or other conditions that reduce visibility, the event will be paused, and racing will resume only once conditions improve.

### 6. Emergency Action Plan

#### Incident Reporting:

- Any accidents or incidents will be immediately reported to the event's safety officers and Fire/EMS teams, who will then initiate the appropriate emergency response.

#### Accident Response:

- The medical team will assess any injuries immediately after the incident and, if necessary, will transport individuals to the nearest medical facility.
- All vehicles involved in accidents will be removed from the track and inspected by officials before any further participation.

#### Post-Incident Review:

- A review of any incidents will be conducted by race officials and safety teams to evaluate what occurred and determine if any safety measures need to be updated.

### 7. Spectator Safety

#### Seating and Viewing Areas:

- Spectator areas will be clearly marked and will be located at a safe distance from the track, behind barriers.
- All spectators will be instructed on proper behavior and the importance of staying in the designated areas.

#### Alcohol and Drug Use:

- The consumption of alcohol or drugs is strictly prohibited for participants and spectators before and during the event.

### 8. Post-Event Review and Improvement

- After each event, the safety measures, procedures, and any incidents will be reviewed to identify areas of improvement.
- Feedback from participants, race officials, and spectators will be gathered to enhance future events.

### Conclusion:

- Safety is the highest priority for a speed contest events off of Molt Road and Buffalo Trail in Yellowstone County, MT. By ensuring all protocols are followed—ranging from vehicle safety to spectator management—this safety plan aims to minimize risks and ensure the well-being of everyone involved.



## Buffalo Trail Rd & Molt Rd



Imagery ©2025 Airbus, Maxar Technologies, USDA/FPAC/GEO, Map data ©2025 200 ft



## Buffalo Trail Rd & Molt Rd

Intersection



Directions



Save



Nearby



Send to  
phone



Share



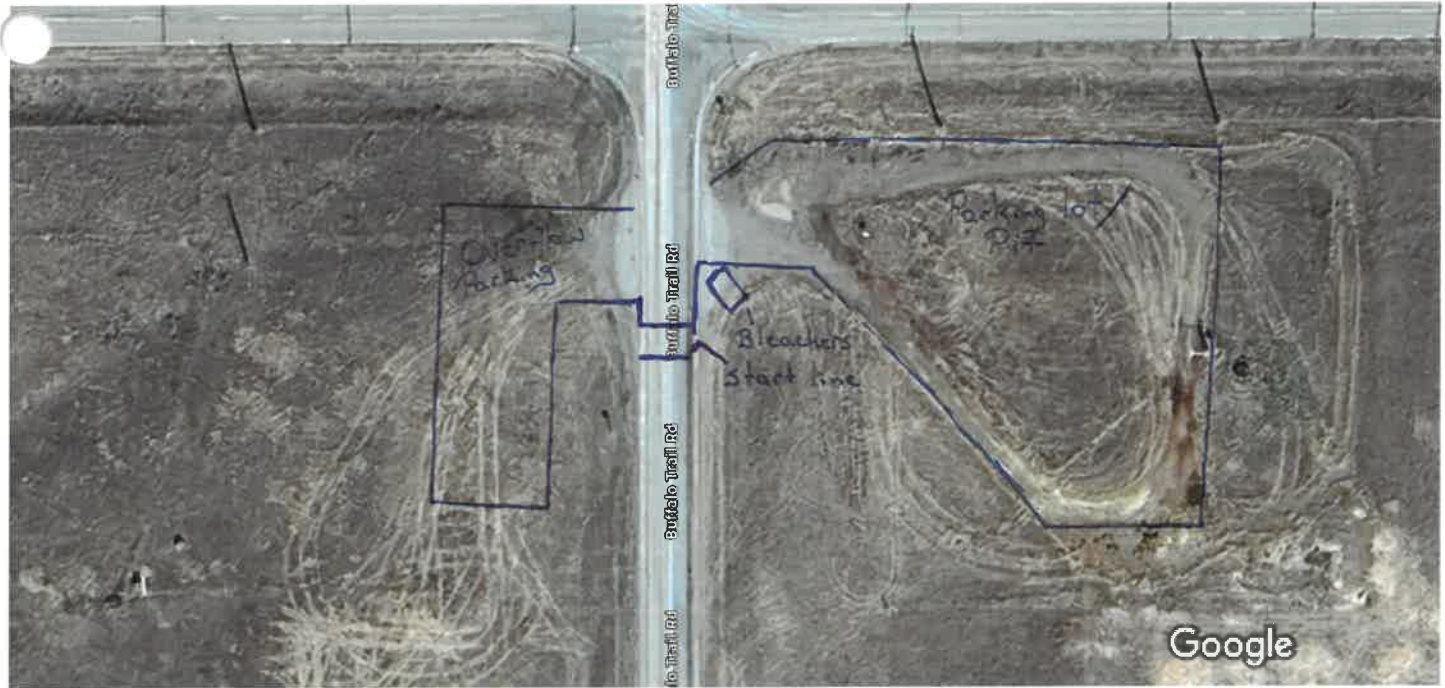
Montana 59057

Photos





## Buffalo Trail Rd &amp; Molt Rd



Imagery ©2025 Airbus, Map data ©2025 20 ft



## Buffalo Trail Rd &amp; Molt Rd

Intersection



Directions



Save



Nearby

Send to  
phone

Share



Montana 59057

## Photos

## Street Legal Class

### Class Description

The street legal class is a racing class for mildly modified to heavily modified high performance street vehicles that are street certified and able to drive to the location of the intersection of: **Buffalo Trail and Mold Road**. All vehicles permitted. Any based engine, and any number and/or type of power adders are permitted. Vehicles must be registered, licensed, and insured. Car must return to pits after every round under its own power unless it breaks.

### Qualifying Information, Ladder Type, & Tree

All Run, 1/8 Mile, Arm Drop/Flashlight Heads up.

### VEHICLES PERMITTED

Any **bodied** vehicles accepted. Rental Cars, EV's, Dragsters are **prohibited**.

### BODY RULES

OEM steel (fiberglass/composite if OEM equipped) body shell required. Aftermarket body kits are permitted. The only permitted lightweight components are hood, front valance, rear valance, front and rear bumpers, and rear trunk lid/hatch. Hood scoops permitted. Any rear wing permitted.

### WINDSHIELD & WINDOWS

OEM safety glass windows required & must be functional. Optic Armor stock replacement Windshield and Rear Glass permitted per manufacturers recommended specs. Any Stationary mounted Side Glass may be replaced with Optic Armor Stock per manufacturer's specs.

Trucks may use Lexan or safety glass for rear window only when roll bar is installed.

### POWER ADDERS & POWERTRAIN

Any based engine, and any number and/or type of power adders are permitted. Any manual or automatic transmission is permitted. Any rear end is permitted.

### CHASSIS & SUSPENSION

**CHASSIS/FRAME**: Stock-type chassis, permitted. Firewall & stock front frame rails from the strut tower to the firewall must be in stock location. Starting at firewall rearward, floor and chassis may be replaced with aftermarket components. No tube chassis or back half vehicles as they are prohibited.

**FRONT SUSPENSION**: Stock-type front suspension, or stock bolt-in-type replacement front suspension required. Tubular front suspension components permitted. Coil over shocks/struts are permitted. Aftermarket replacement control arms are allowed. Aftermarket K-Members/Commercially available sub-Frames allowed. (Must have prior approval from tech)

Strut towers must be in factory location with factory sheet metal attaching factory frame rail to top of strut tower, can be notched, windowed, or trimmed for header clearance but must maintain factory sheet-metal attachment. From the forward edge of shock tower, the stock frame rails can be modified. Stock frame rails must remain in place from firewall to forward leading edge of shock / strut tower.

**REAR SUSPENSION:** Must have rear suspension.

### **STREET EQUIPMENT**

To compete, all vehicles and/or drivers are required the following:

1. Valid driver's license
2. Valid vehicle registration
3. Valid license plate(s). Dealer plates prohibited. Paper license tag will be accepted on a new model year car with current registration paperwork less than 60 days old from current event date.
4. Valid insurance "ID" card. Faxes and/or letters from insurance companies and/or brokers not acceptable.
5. Valid state inspection sticker (if required by state vehicle is registered).
6. D.O.T. Radials or D.O.T. Slicks on rear of vehicle.
7. Hood may be made of lightweight material. Hood scoops permitted. Hood/scoop may be liftoff.
8. Performance aftermarket or OEM style Driver and Passenger seats required.

During the tech-in process, vehicles must have operational street equipment, including headlights, taillights, brake lights, license plate light, turn signals (hand signal is acceptable).

### **TIRES: FRONT & REAR**

DOT legal tires required for drive tires during the road tour AND the Weekend Warrior competition and class run off. Racing slicks and non D.O.T. rated tires prohibited. Tire changing is prohibited during or after the road tour.

### **COOLDOWN PERIOD/RETURN PROCEDURES**

Every vehicle must be driven to the speed contest. When the vehicles arrive, they will be assigned to the designated staging lanes for the cool-down period. The cool-down period will last 30 minutes minimum.

During this cool down period only, entrants may: Adjust tire pressure (add or remove tire pressure), Install fresh nitrous bottles, Install ice in their intercooler. Fuel vehicle.

**Anything not listed is prohibited.** Engines must remain turned off during the entire cool-down period. External cooling of engine by any means (cold water, outdoor fans, etc.) prohibited. Any

engine changes prohibited. Changing of tires prohibited. No laptops in vehicles permitted at any time on the racetrack unless secured. No external charging of battery / batteries permitted.

### **WEIGHT BREAKS**

There is no minimum weight.

### **LADDER BRACKETS**

All brackets will be done as a chip/card draw with lane designation on the chip.

### **CREDENTIALS**

A valid state or government issued driver's license beyond a learner/s any competitor.

## **ASSUMPTION OF RISK, RELEASE OF LIABILITY, AND WAIVER AGREEMENT**

This Assumption of Risk and Waiver Agreement (the "Agreement") is entered into on May \_\_\_\_\_, 2025, by and between The Order of Chosen Friends ("Organizer") and the undersigned participant ("Participant"), who wishes to participate in the Street Legal Speed Contest Event (the "Event").

### **1. Acknowledgment and Assumption of Risk**

1.1. Participant understands that participation in a speed contest event involves inherent risks, including but not limited to:

- Collision with other vehicles, objects, or persons
- Loss of vehicle control
- Mechanical failure
- Personal injury or death
- Damage to personal property

1.2. Participant voluntarily assumes all risks associated with participating in the Event, whether known or unknown.

### **2. Release and Waiver of Liability**

2.1. Participant fully understands and acknowledges that engaging in the Event involves substantial risks, both foreseeable and unforeseeable, which could result in serious injury, disability, death, or property damage.

2.2. Participant knowingly, voluntarily, and expressly waives, releases, and discharges Organizer, event sponsors, Yellowstone County, landowners, event officials, volunteers, the individual themselves, and any related entities, including but not limited to employees, agents, insurers, and contractors (collectively, "Released Parties") from any and all claims, liabilities, demands, causes of action, damages, expenses, or losses of any kind, including but not limited to those arising from negligence or wrongful acts of the Released Parties.

2.3. Participant expressly agrees that this waiver and release extends to all claims, whether known or unknown, anticipated or unanticipated, that may arise out of or relate in any way to participation in the Event, including those arising from ordinary negligence of the Released Parties.

2.4. Participant further agrees to release and discharge the Released Parties from any claim related to the use, maintenance, condition, or failure of any vehicle, county road, or equipment used in connection with the Event.

2.5. Participant acknowledges that they are voluntarily waiving substantial legal rights, including the right to sue for damages, and *that they have had the opportunity to consult with legal counsel regarding this waiver.*

2.6. Participant agrees that if any portion of this Release and Waiver of Liability is found to be invalid, the remaining portions shall remain in full force and effect.

### **3. Indemnification**

3.1. Participant agrees to indemnify, defend, and hold harmless the Released Parties from and against any and all claims, liabilities, damages, losses, costs, or expenses (including attorneys' fees) arising from or related to their participation in the Event.

### **4. Safety and Conduct Agreement**

4.1. Participant agrees to comply with all safety rules and instructions set by the Organizer and track officials.

4.2. Participant affirms that they are in good health, possess a valid driver's license, and are legally permitted to operate a vehicle in the Event.

4.3. Participant understands that drugs and alcohol are strictly prohibited before and during participation in the Event.

### **5. Media Release**

5.1. Participant grants permission for photographs, videos, or other media taken during the Event to be used by the Organizer for promotional purposes without compensation.

### **6. Governing Law and Jurisdiction**

6.1. This Agreement shall be governed and interpreted under the laws of Montana in the jurisdiction of Yellowstone County.

### **7. Acknowledgment of Understanding**

7.1. Participant certifies that they have read and fully understood this Agreement, and they are signing it voluntarily.

### **\*\*PARTICIPANT INFORMATION\*\***

Name: \_\_\_\_\_ Date: \_\_\_\_\_

Address: \_\_\_\_\_ Phone: \_\_\_\_\_

Signature: \_\_\_\_\_ Driver's License: \_\_\_\_\_

**Parent/Guardian Signature:** \_\_\_\_\_

# Christopher Mitchell

---

Create a safe environment for a speed contest. Safety is the number one priority for anything to be successful.

## Experience

---

### **2013 - Current Mitchells Performance & Tuning**

Owner/Operator of Engine Machine Shop. Daily duties consist of office book keeping, ordering product, machining parts, assembly & calibration/tuning of vehicles.

### **2013- Current Billings On-Time Snow Service**

Owner/Operator of a snowplowing company. Daily duties consist of plowing parking lots/roads and shoving snow for the safety of travel be vehicle and by foot.

### **2016 – 2022 Yellowstone Drag Strip**

Tech and safety inspector of all race vehicles at the drag-strip. It was my responsibility to look over and deem vehicles safe for engaging in a speed contest. It was also my responsibility making sure the pilot/driver was safe to engage in a speed contest

### **2005-2014**

#### **Montana Furniture Outlet**

Store manager/distribution manager. My daily duties consisted of Managing 30+ employees from day to day. General duties of Ordering product, shopping for product, directing sales and delivery employees, banking, book keeping and all other necessary tasks needed.

## Education

---

2005 – 2009

### **Eastern Wyoming College**

Business Management

Mathematics

Certified NHRA Technical Inspector

Certified SFI Technical Inspector

## Skills

---

- Creativity
- Leadership
- Organization
- Problem solving
- Teamwork

## Contact

---

136 Florine Lane  
Billings. Montana 59101  
406-598-4847  
Cmfmtoon@outlook.com