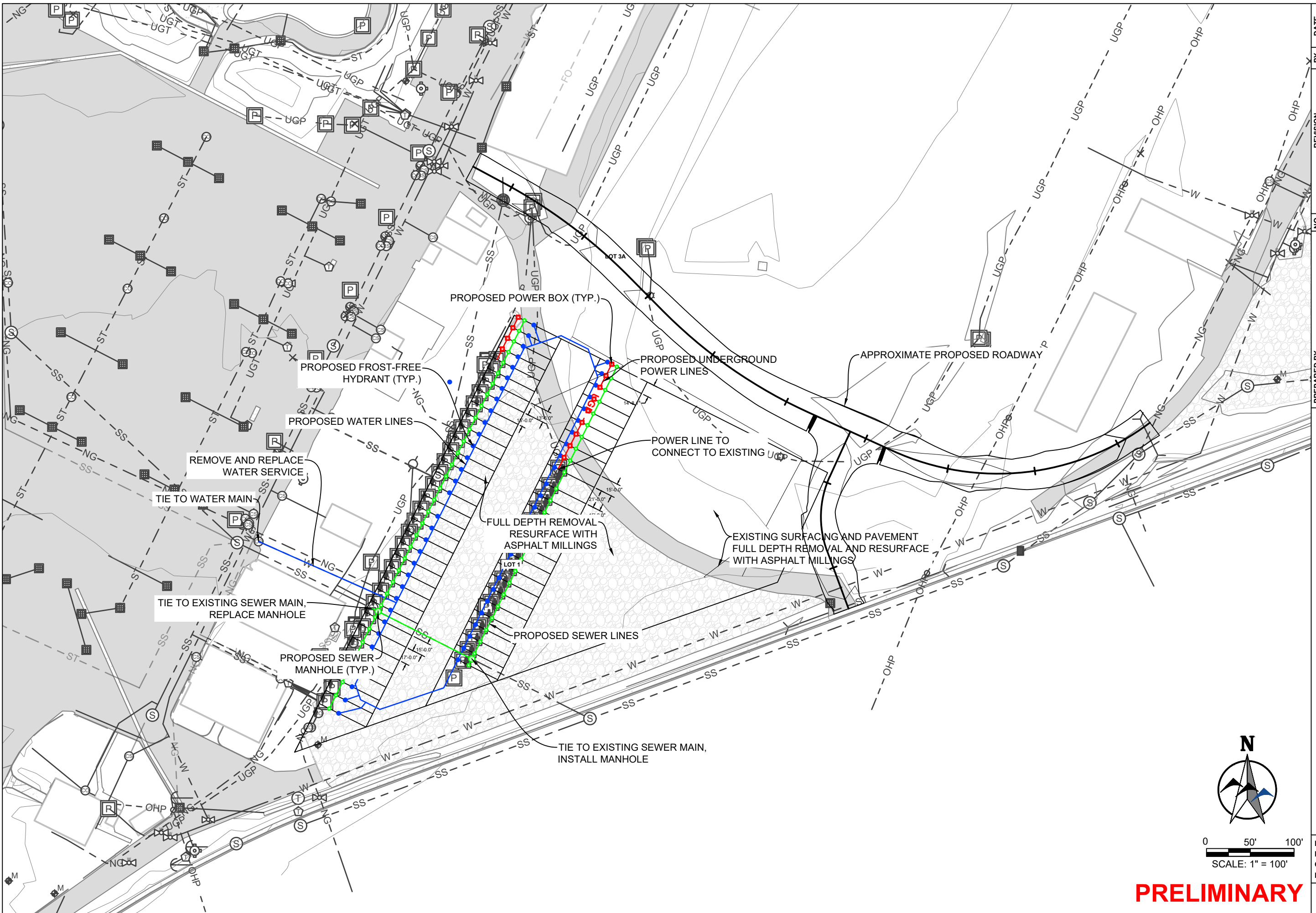


K:\Sheridan\Yellowstone County, MT\2021555 MetraPark Infrastructure Improvements\05CAD\Sheets\PLAN\_SET\04\_Arena\_Back Lots\PHASE 3 - LOT 1\04\_IMPROVEMENTS\21555-LOT-1\_IMPROV.dwg improvement overview 11/7/2023 1:23:21 PM



TIE TO WATER MAIN

REMOVE AND REPLACE WATER SERVICE

TIE TO EXISTING SEWER MAIN, REPLACE MANHOLE

PROPOSED SEWER MANHOLE (TYP.)

PROPOSED POWER BOX (TYP.)

PROPOSED UNDERGROUND POWER LINES

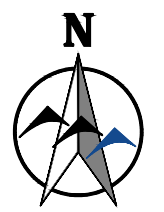
POWER LINE TO CONNECT TO EXISTING UGP

FULL DEPTH REMOVAL RESURFACE WITH ASPHALT MILLINGS

EXISTING SURFACING AND PAVEMENT FULL DEPTH REMOVAL AND RESURFACE WITH ASPHALT MILLINGS

APPROXIMATE PROPOSED ROADWAY

TIE TO EXISTING SEWER MAIN, INSTALL MANHOLE



0 50' 100'  
SCALE: 1" = 100'

**PRELIMINARY**

NO.	REVISION	BY	DATE

PREPARED BY **WWC** ENGINEERING  
 550 S. 24TH ST. W., SUITE 201  
 BILLINGS, MT 59102  
 (406) 894-2210  
 www.wwcengineering.com

YELLOWSTONE COUNTY  
**ARENA BACK LOTS - PHASE 3**  
**LOT 1 IMPROVEMENT OVERVIEW**  
 BILLINGS, MT

DESIGNED BY: MBP  
 DRAWN BY: ZSL  
 CHECKED BY: GTR  
 DATE: X/X/XX

SHEET  
**5**

PROJECT NO. 2021-555